

STATS PERFORM

optapro

**How Do Attacking and Defending
Strategies Affect Goalscoring
Opportunities From Throw-Ins?**

David Quartey |  @DaveQuartey | #OptaProForum



How do attacking and defending strategies affect goalscoring opportunities from throw-ins?

A Brief Introduction



David Quartey | @DaveQuartey

#OptaProForum

Opportunities Throw-Ins present



A throw in is a set play which gives a team an opportunity to restart play with an **uncontested pass**.



How Many Throw-Ins Do Teams Make?

A team makes about **21** throw ins per game on average

Which Throw-Ins Are We Focusing On?

We will look at passages of play started by a throw-in that:

- Are progressive
- Start in the final third

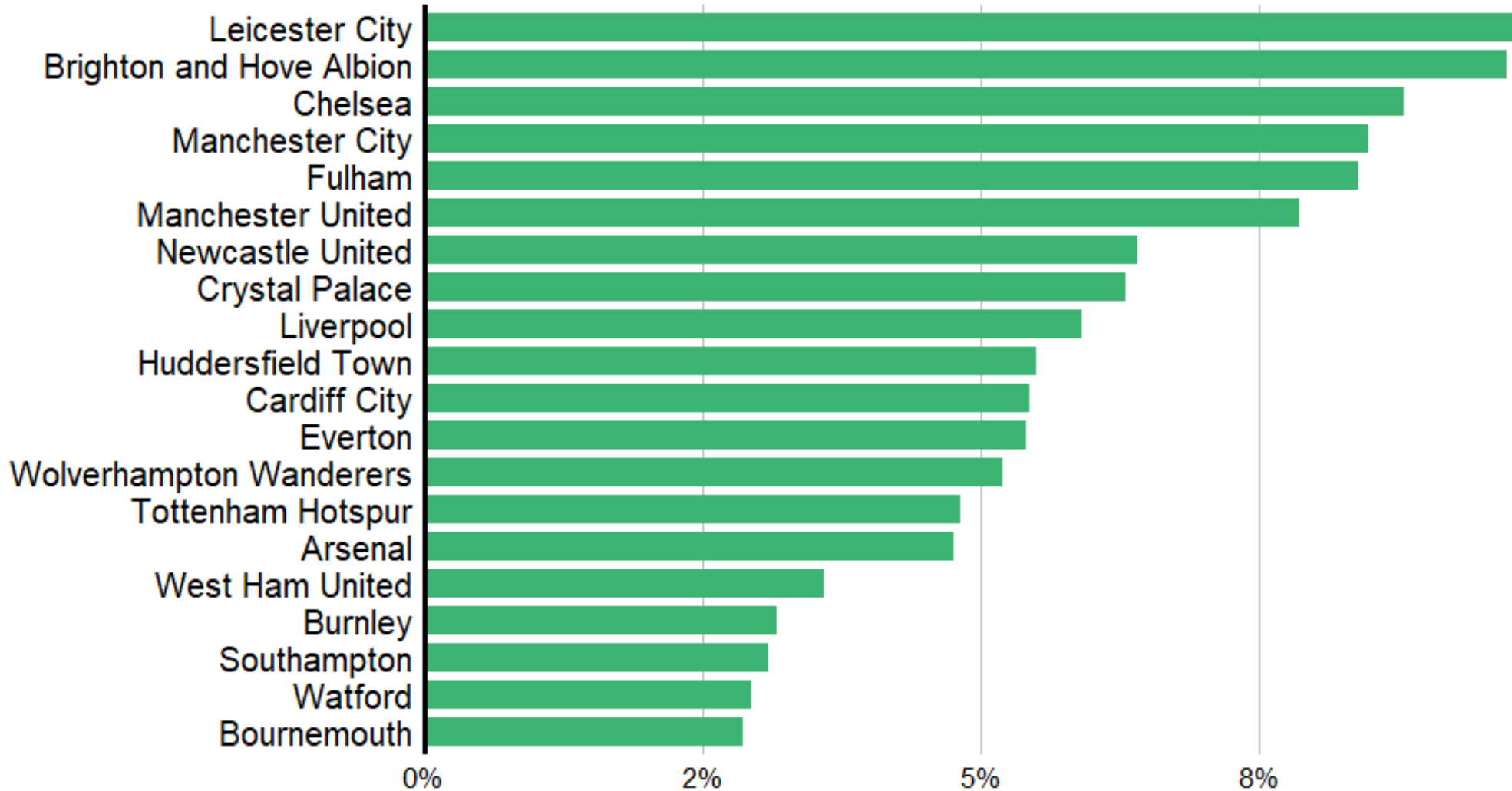
These passages of play are ended by:

- Defensive actions by the opposition team.
- Stoppages in play (e.g. the ball going out of play)
- Chances created (e.g. goals, penalties, shots & missed chances)

How do attacking and defending strategies affect goalscoring opportunities from throw-ins?

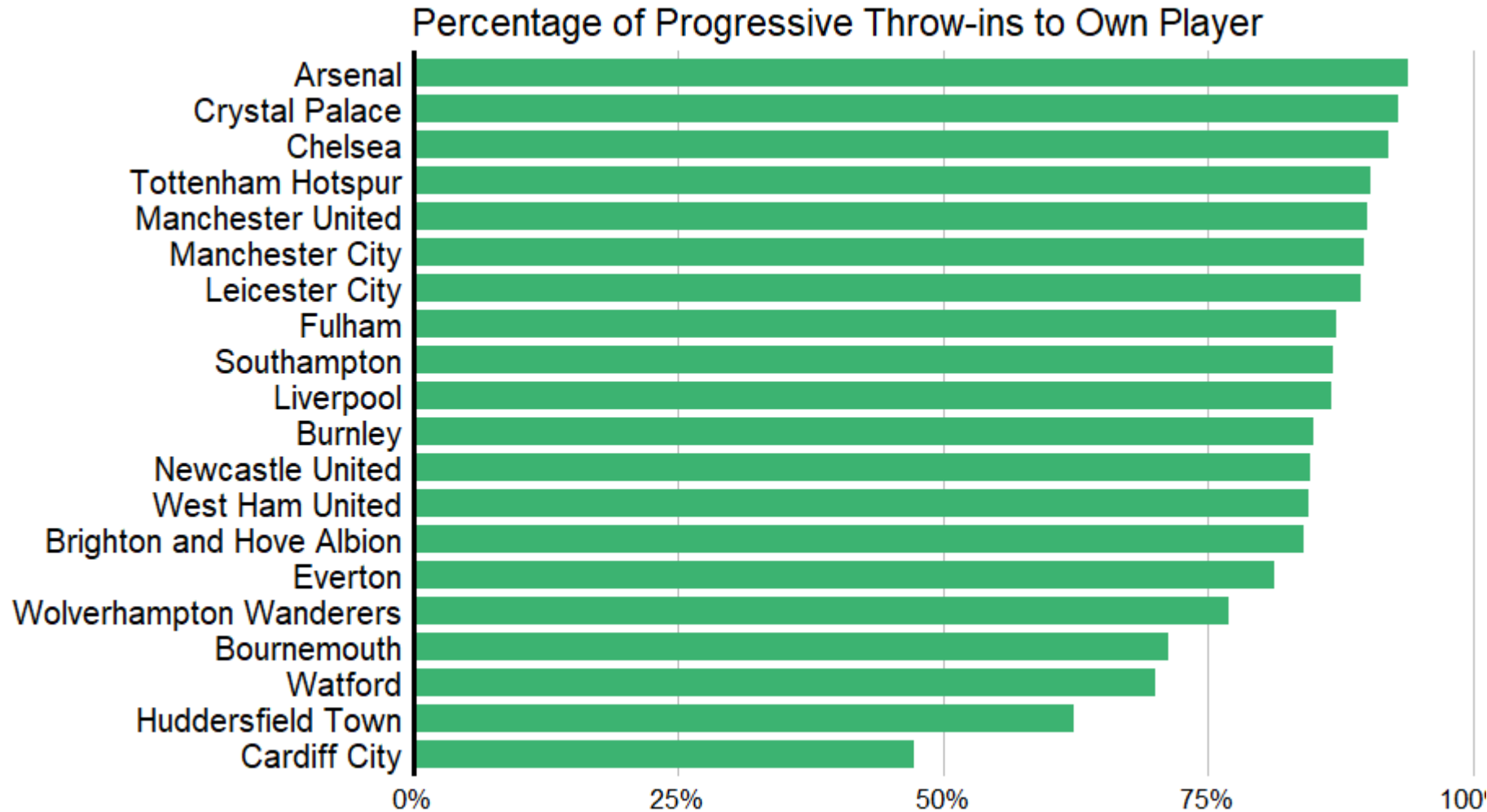
Throw-Ins Used in Creating Chances

Percentage of Progressive Throw-ins leading to chance creation



How do attacking and defending strategies affect goalscoring opportunities from throw-ins?

Throw-Ins Are Sometimes Used In Retaining Possession



Why Does This Matter?



Coaches can **optimise** the best throw-in strategy for their teams and **train their players** to get the best results



What Are The Different Throw-In Types and Strategies That Teams Deploy?

Attacking throw-in strategies:

- Mixed
- Consistent

Defensive throw-in strategies:

- Aggressive
- Non-Aggressive

Different throw-in types used:

- Fast & long
- Fast & short
- Slow & long
- Slow & short

How do attacking and defending strategies affect goalscoring opportunities from throw-ins?

Throw-In Types By Length



Throw-In Types

By Speed to take throw-in

The optimal time to take a throw-in is within 5 seconds of the ball going out of play.

Thomas Gronnemark
Liverpool Throw-in Coach

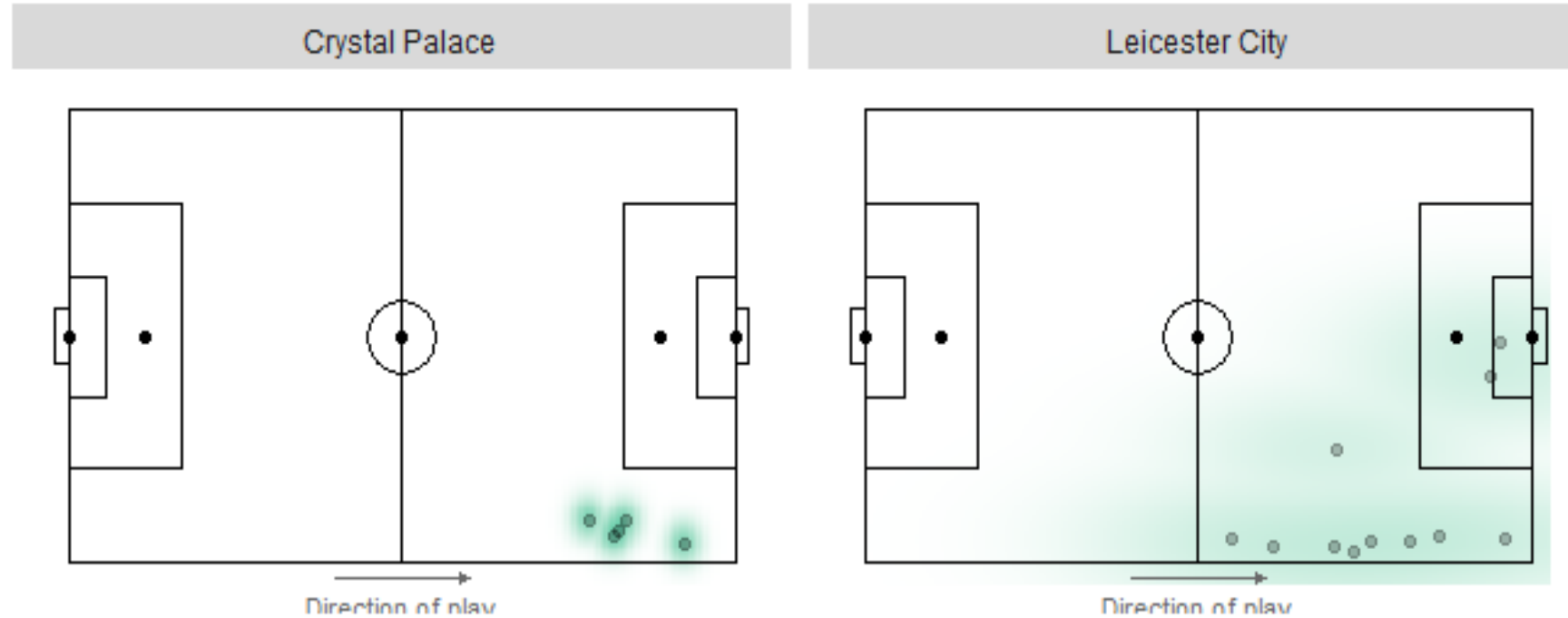
Source: thisisanfield.com

How do attacking and defending strategies affect goalscoring opportunities from throw-ins?

Two Different Attack Strategies

Crystal Palace vs Leicester City

EPL 2018/2019



Consistent Throw-in Strategy

Mixed Throw-in Strategy

How do attacking and defending strategies affect goalscoring opportunities from throw-ins?

What Does It Mean For a Throw-In to be Aggressively Defended?



Throw-In Analysis

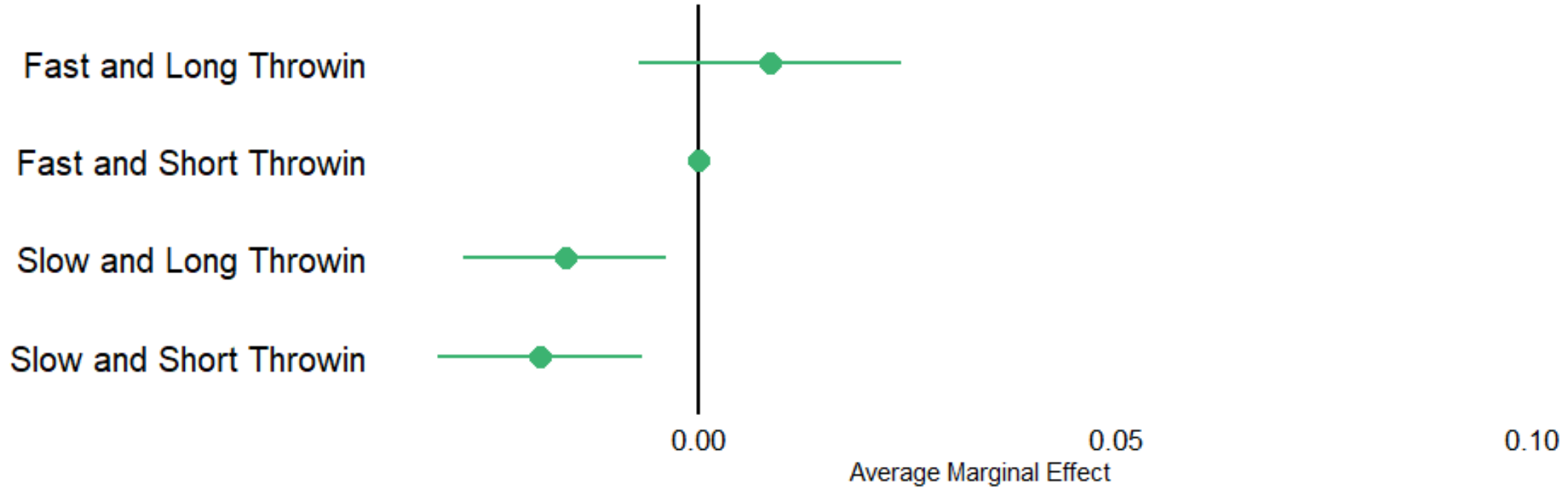
1. Does the type of throw-in teams use in attack influence chance creation?

Using a logistic regression model consisting of:

- Types of throw-in
- Whether it resulted in a chance or not
- Adjusted for team quality

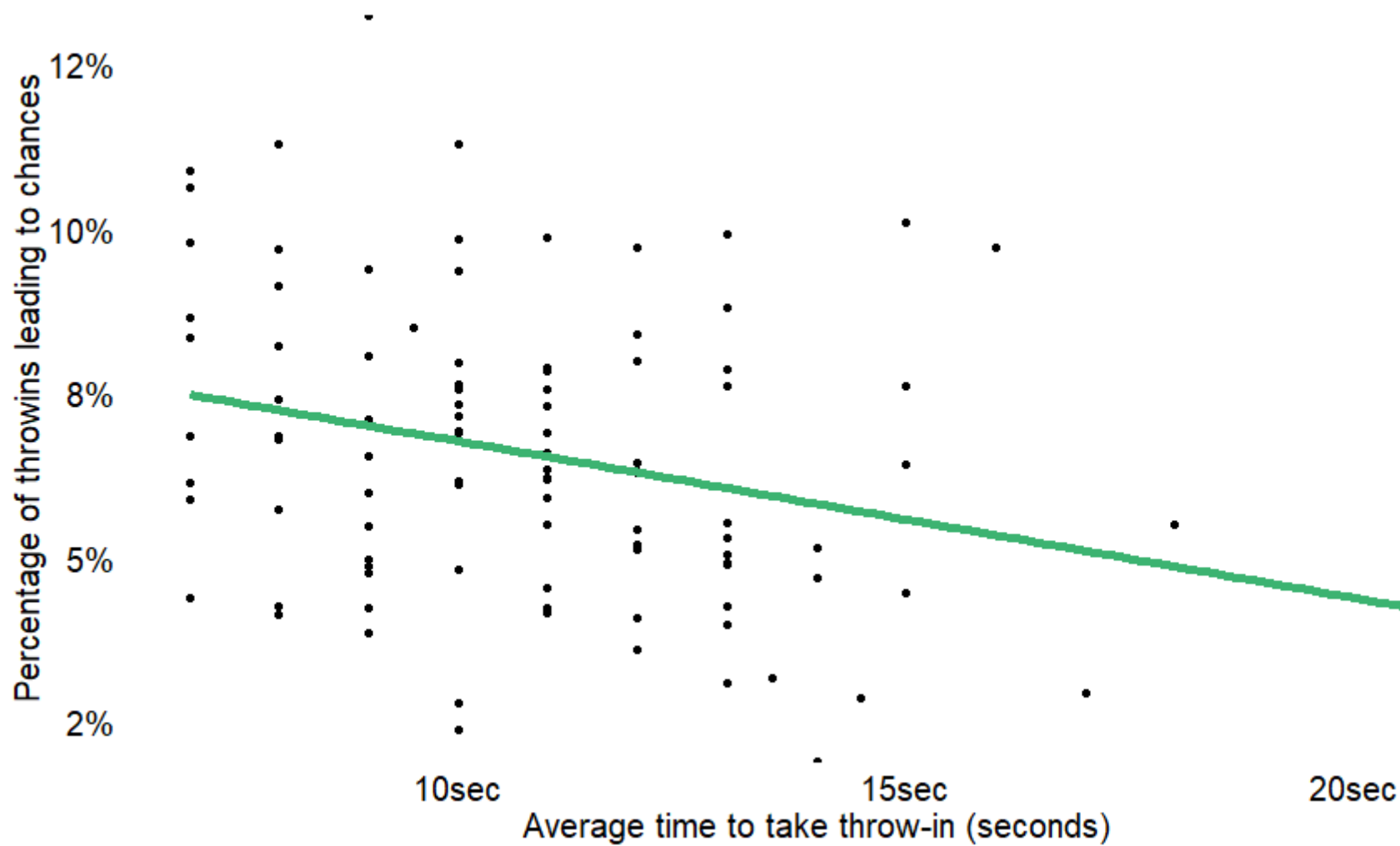
How do attacking and defending strategies affect goalscoring opportunities from throw-ins?

1. Does The Type Of Throw-In Teams Use In Attack Influence Chance Creation?



How do attacking and defending strategies affect goalscoring opportunities from throw-ins?

Teams Taking Throw-Ins Slowly Create Less Chances From Them



Throw-In Analysis

1. Does the type of throw-in teams use in attack influence chance creation?

Using a logistic regression model consisting of:

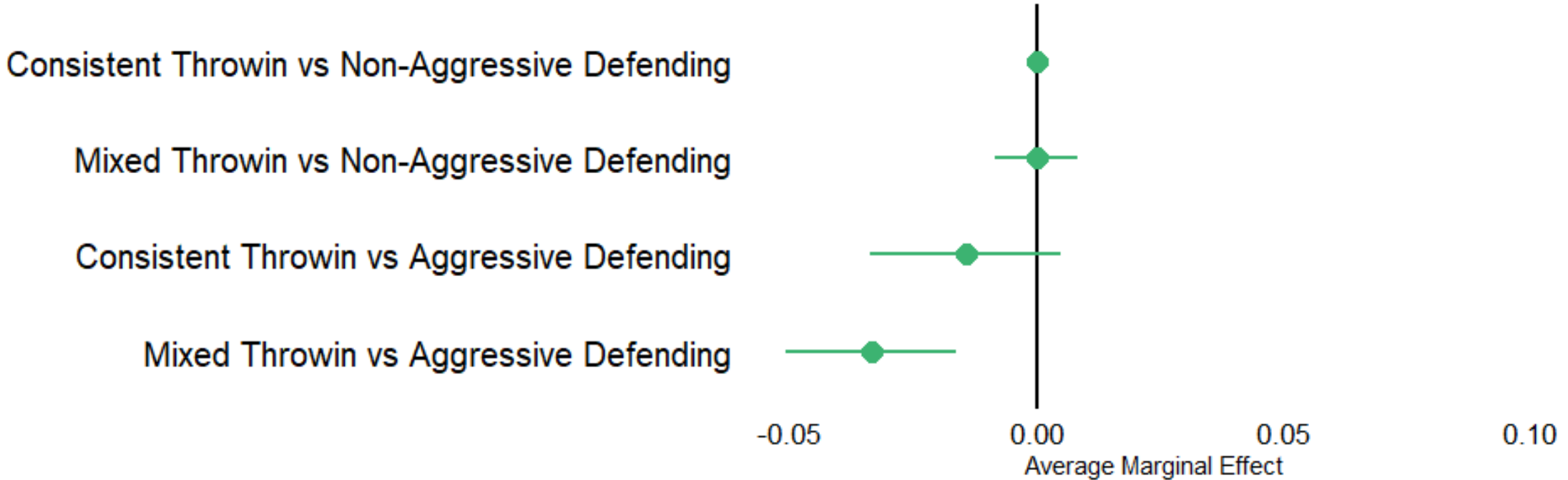
- Types of throw-in
- Whether it resulted in a chance or not
- Adjusted for team quality

2. Do throw-in attacking and defending strategies affect chances created?

Using logistic regression models consisting of:

- The throw-in strategy used by the attacking team
- The defensive strategy used by the defending team
- Whether it resulted in a chance or not
- Adjusted for team quality

2. Do Throw-In Attacking and Defending Strategies Affect Chances Created?



Tactical Applications

- Fast throw-ins against unsettled defenses or teams deploying a low block.
 - Example: Serge Aurier's throw-in for Spurs vs Olympiacos in Champions League

49:04

TOT 1 | 2 OLY

LIVE
beIN SPORTS HD 6



Tactical Applications

- Fast throw-ins against unsettled defenses or teams deploying a low block.
 - Example: Serge Aurier's throw-in for Spurs vs Olympiacos in Champions League
- Train around using throw-in as press triggers in the defensive 3rd
 - Example: Bayer Leverkusen pressing Borussia Dortmund's advanced throw-in

STEN bwin bwin bwin EVONIK SIGNAL IDUNA SPORTWETTEN



How do attacking and defending strategies affect goalscoring opportunities from throw-ins?

Tactical Applications

- Fast throw-ins against unsettled defenses or teams deploying a low block.
 - Example: Serge Aurier's throw-in for Spurs vs Olympiacos in Champions League
- Train around using throw-in as press triggers in the defensive 3rd
 - Example: Bayer Leverkusen pressing Borussia Dortmund's advanced throw-in
- Rehearsed throw in routines to create chances
 - Example: Jordan Henderson blocking the opposition marker



LIV 1-0 WAT
61:40

sky SPORT 1 HD LIVE

Premier League

Key Takeaways

- Speed is important if throw-ins are to kick-start successful passages of play.
- Defending strategies are key to restricting throw ins from leading to goalscoring opportunities.
- Throw-ins are underutilized in football and coaches can take advantage of this!

Future Research

- Measuring clever throws
 - Allows the receiver to retain the ball under pressure
 - Identifies unexpected runs

- Difference clever throws make in creating goalscoring opportunities

How do attacking and defending strategies affect goalscoring opportunities from throw-ins?

Main Contributor



David
Quartey

Acknowledgements



Dan Altman,
Founder,
North Yard
Analytics



Lucy Rushton,
Head of Technical Recruitment
& Performance Analysis,
Atlanta United FC



Jonathan Whitmore,
Opta Data Analyst,
Stats Perform

STATS PERFORM

optapro

Thank You

